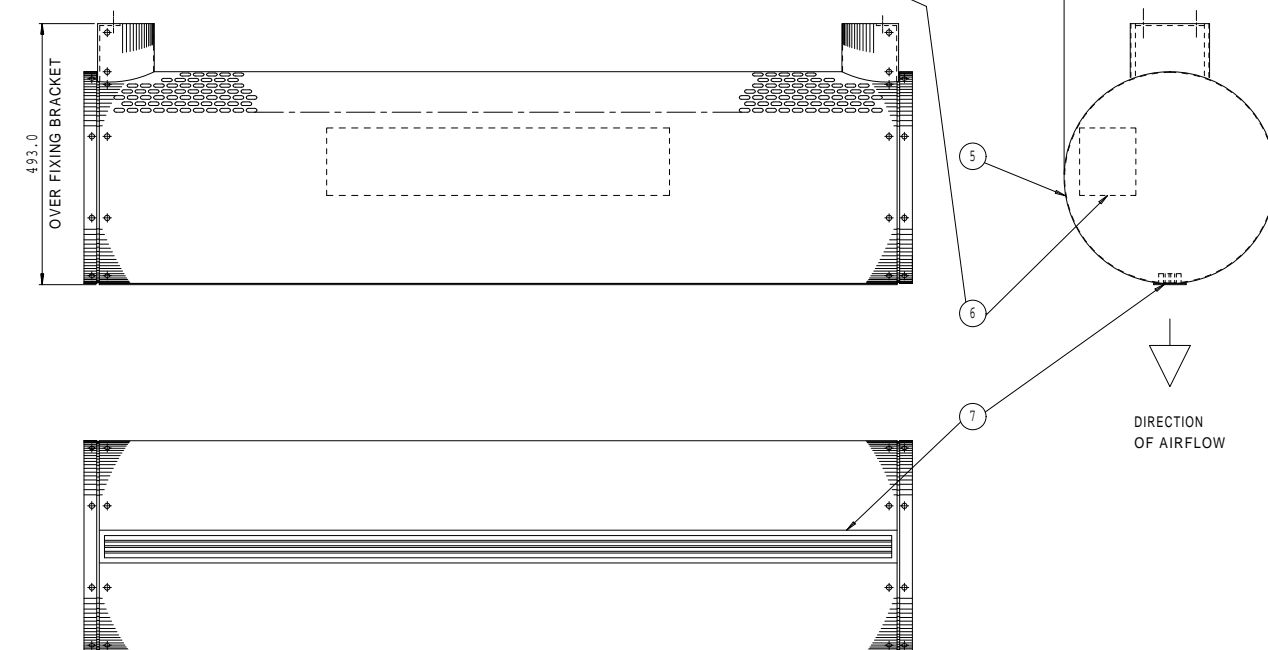


ITEM	DESCRIPTION
1	CABLE ENTRY HOLES $\phi$ 20.0 & $\phi$ 13.0
2	COIL TAILS $\phi$ 22mm OD PLAIN TAILS (LPHW UNITS ONLY)
3	PIPEWORK / CABLES / DROP ROD SHROUD
4	FIXING HOLES $\phi$ 13mm (4-POSITIONS)
5	ACCESS PANEL
6	CONTROL BOX
7	DISCHARGE GRILLE



OPTIONS:

- LPHW / ELECTRIC UNITS: PIPEWORK / CABLES / DROP ROD SHROUDS CAN BE SUPPLIED IN LONGER LENGTHS TO SUIT DIFFERENT APPLICATIONS.
- LPHW UNITS: COIL TAILS CAN BE AT THE OPPOSITE END OF UNIT.

NOTES:

1. GENERAL TOLERANCE ON OVERALL DIMENSIONS: +/-4mm.
2. OUTER CASING FINISHED IN POWDERCOAT PAINT (COLOUR SPECIFIED BY THE CUSTOMER), OR BRUSHED STAINLESS STEEL.
3. DISCHARGE GRILLE PAINTED TO MATCH OUTER CASING, OR WITH A NATURAL ANODISED ALUMINIUM FINISH.

DIRECTION OF AIRFLOW

The designs shown in these drawings are the original creations of Diffusion Environmental Systems which owns all the intellectual property rights therein. No reproduction may be made of the drawings nor may articles be made therefrom without prior written permission  
**ALL RIGHTS RESERVED**  
**C D*iffusion* 2000**

REV.	MOD.NO.	DATE	DRN	CHKD	DRAWING TO B.S. 308:PARTS 1,2 AND 3.		DRAWING SCALE: 1:1	PRINT SCALE: N.T.S.	DRAWN	MW	DIFFUSION 47 Central Avenue, West Molesey, Surrey, KT8 2QZ Telephone 020 8783-0033. Fax 020 8783 0140 email: diffusionheat@etenv.co.uk																																								
1	REQ5098	17-09-10	MW		WELDING TERMS AND SYMBOLS TO B.S. 499:PART 2.					17-09-10	TITLE GENERAL ARRANGEMENT - SALES CHAMELEON $\phi$ 400 1000/1500 LPHW/ELECTRIC CIRCULAR DOOR HEATER HORIZONTAL (TOP MOUNTED VERSION)																																								
MODIFICATION					<table border="1"> <thead> <tr> <th colspan="4">GEOMETRIC TOLERANCE SYMBOLS</th> </tr> <tr> <th>CHARACTERISTIC</th> <th>SYM</th> <th>CHARACTERISTIC</th> <th>SYM</th> </tr> </thead> <tbody> <tr> <td>Straightness</td> <td>—</td> <td>Angularity</td> <td>∠</td> </tr> <tr> <td>Flatness</td> <td>▭</td> <td>Run out</td> <td>↗</td> </tr> <tr> <td>Roundness</td> <td>○</td> <td>Position</td> <td>⊕</td> </tr> <tr> <td>Cylindricity</td> <td>∩</td> <td>Concentricity</td> <td>⊙</td> </tr> <tr> <td>Profile of a line</td> <td>⌒</td> <td>Symmetry</td> <td>≡</td> </tr> <tr> <td>Profile of a surface</td> <td>⌒</td> <td>M.C.C.</td> <td>⊖</td> </tr> <tr> <td>Parallelism</td> <td>//</td> <td>Squareness</td> <td>⊥</td> </tr> </tbody> </table>		GEOMETRIC TOLERANCE SYMBOLS				CHARACTERISTIC	SYM	CHARACTERISTIC	SYM	Straightness	—	Angularity	∠	Flatness	▭	Run out	↗	Roundness	○	Position	⊕	Cylindricity	∩	Concentricity	⊙	Profile of a line	⌒	Symmetry	≡	Profile of a surface	⌒	M.C.C.	⊖	Parallelism	//	Squareness	⊥	ALL DIMENSIONS IN MM THIRD ANGLE PROJECTION		TOLERANCES UNLESS OTHERWISE STATED DIMENSIONAL $\pm$ 0,5 ANGULAR $\pm$ 1°		MATERIAL		FINISH		JOB STANDARD OPTION
GEOMETRIC TOLERANCE SYMBOLS																																																			
CHARACTERISTIC	SYM	CHARACTERISTIC	SYM																																																
Straightness	—	Angularity	∠																																																
Flatness	▭	Run out	↗																																																
Roundness	○	Position	⊕																																																
Cylindricity	∩	Concentricity	⊙																																																
Profile of a line	⌒	Symmetry	≡																																																
Profile of a surface	⌒	M.C.C.	⊖																																																
Parallelism	//	Squareness	⊥																																																
											DRG.NO. <b>A1/25361</b>																																								