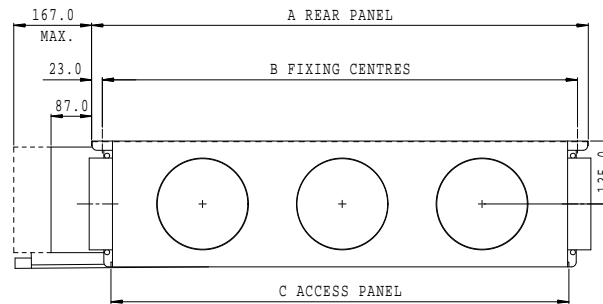


UNIT	A	B	C	Ø 197 SPIGOTS		Ø 247 SPIGOTS	
				SPIGOT PITCH: D	TOTAL No.OFF	SPIGOT PITCH: D	TOTAL No.OFF
06	691	645	608	250	4	300	4
09	911	865	828	260-260	5	400	4
12	1066	1020	983	300-300	5	453	4
13	1244	1198	1161	350-350	5	350-350	5
15	1491	1445	1408	325-325-325	6	455-455	5
18	1876	1830	1793	350-350-350-350	7	350-350-350-350	7

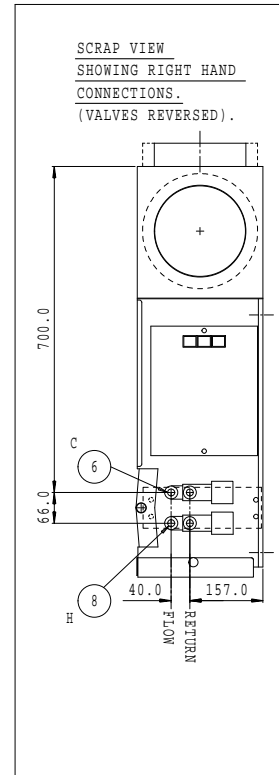
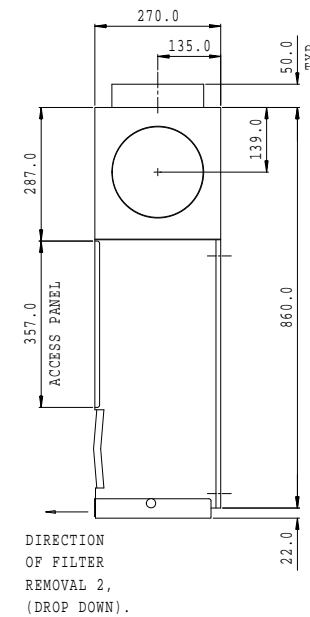
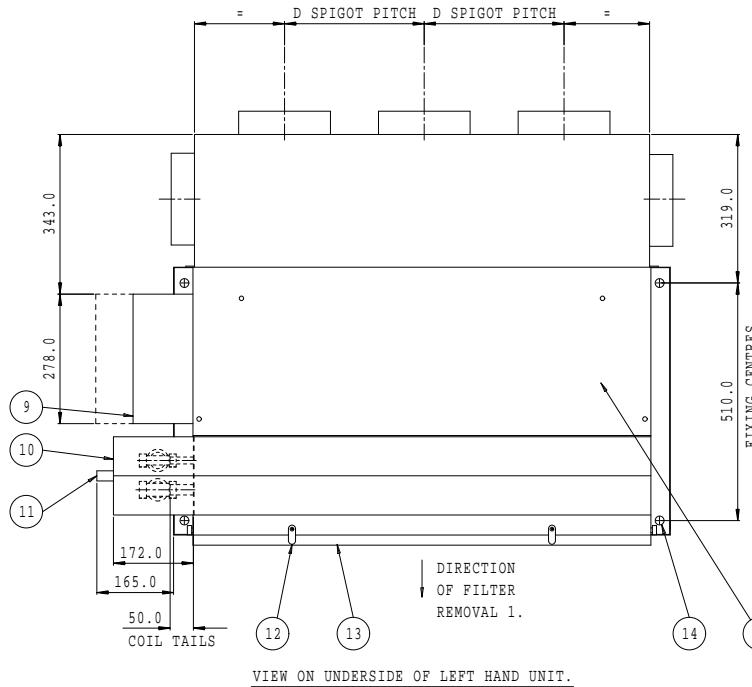
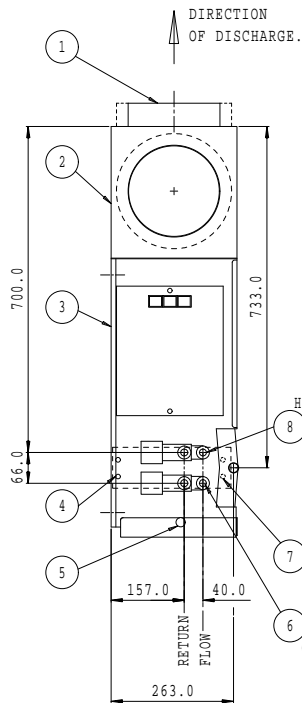
DISCHARGE OPTIONS.



NOTES:

1. ACOUSTIC LINED UNIT AS STANDARD.
2. LEFT HAND UNIT AS DRAWN, RIGHT HAND OPPOSITE HAND, (HEATING AND COOLING VALVES REVERSED SEE SCRAP VIEW BELOW).
3. BY LOOSENING ONE THUMBSCREW THE FILTER CAN BE REMOVED STRAIGHT OFF THE END OF THE UNIT, ALTERNATIVELY, THE FILTER CAN DROP DOWN AND SLIDE OUT.
4. GENERAL TOLERANCE ON OVERALL DIMENSIONS +/- 4mm.
5. FIXINGS (BY OTHERS) TO INCLUDE LARGE WASHERS. ALTERNATIVELY ANTI-VIBRATION MOUNTS CAN BE SUPPLIED BY ET ENVIRONMENTAL LTD, (WASHERS SUPPLIED).

ITEM	DESCRIPTION
1	DISCHARGE SPIGOTS Ø 197 TYP. OR Ø 247 TYP.
2	DISCHARGE PLENUM.
3	UNIT REAR PANEL.
4	COIL VENTS.
5	THUMBSCREWS FOR FILTER REMOVAL.
6	COOLING CONNECTIONS SIZE 06,09,12,13: Ø 15mm. COOLING CONNECTIONS SIZE 15: Ø 15mm OR Ø 22mm, (DEPENDING UPON SELECTION). COOLING CONNECTIONS SIZE 18: Ø 22mm.
7	COIL DRAINS.
8	HEATING CONNECTIONS Ø 15mm.
9	CONTROL BOX C/W FAN ON/OFF SPEED AND TRIM CONTROLS, (NOT REQUIRED ON EC UNITS)
10	CONDENSATE DRIP TRAY.
11	CONDENSATE DRAIN Ø 22mm.
12	TAB FOR FILTER REMOVAL (SEE NOTE 3).
13	FILTER (SEE NOTE 3).
14	UNIT FIXING HOLE Ø 19.0 TYP.
15	FAN ACCESS COVER.



OPTIONS:

1. INLET SPIGOT WITH SLIDE DOWN FILTER (NOT SHOWN).
2. CONDENSATE PUMP (NOT SHOWN).
3. ELECTRIC HEATING ELEMENTS (NOT SHOWN).
4. FRESH AIR SPIGOT.
5. ANTI-VIBRATION MOUNTS.

REV.	MOD.NO.	DATE	DRN	CHKD	DRAWING TO B.S. 308:PARTS 1,2 AND 3. WELDING TERMS AND SYMBOLS TO B.S. 499:PART 2.	DRG SCALE 1:1	PRINT SCALE NTS	DRAWN MW	ET ENVIRONMENTAL LTD 47 Central Avenue, West Molesey, Surrey, KT8 2QZ Telephone 020-8783-0033. Fax 020-8783-0140
2	COOLING CONNS. ADJUSTED	27-01-11	MW			MAT'L		DATE 08-11-10	TITLE SALES GA. HIGHLINE H270 WATERSIDE RANGE H270-WH-06,09,12,13,15,18-CH-LH
					GEOMETRIC TOLERANCE SYMBOLS				
					CHARACTERISTIC SYM CHARACTERISTIC SYM	ALL DIMENSIONS IN MM THIRD ANGLE PROJECTION			
					Straightness — Angularity ∠	TOLERANCES UNLESS OTHERWISE STATED			
					Flatness ▽ Run out ∕	DIMENSIONAL ± 0,5			
					Roundness ○ Position ⊕	ANGULAR ± 1°			
					Cylindricity ⌀ Concentricity ⊙			APP'D	JOB STANDARD
					Profile of a line ⌒ Symmetry ≡			DATE	DRG.NO. A1/25406
					Profile of a surface ⌒ M.M.C. ⊖				
					Parallelism ∕∕ Squareness ⊥				
1	FIRST ISS.	08-11-10	MW			FINISH			