

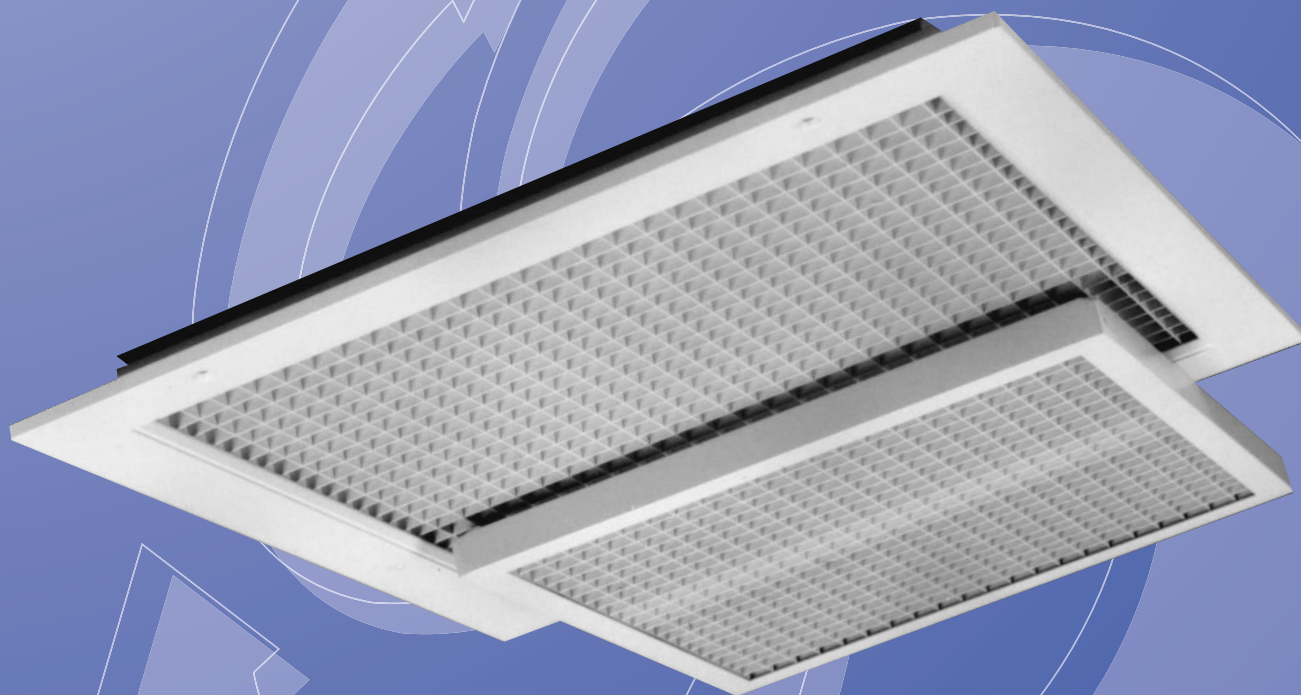
SERIES GE

Eggcrate Grilles

PUBLICATION

GRILLES 4

JAN 2013



Features

- 13mm Eggcrate Core.
- Flange or Channel Frame Border.
- Wide Flexible Size Range.
- Extruded Aluminium Construction.
- 0° or 45° Eggcrate Core



GILBERTS

SERIES GE

Eggcrate Grilles

Introduction

Gilberts GE Series provides a comprehensive and traditional range of Eggcrate type grilles to suit all types of extract application in ceiling and walls. Attractively styled with a 13mm square Eggcrate type core the GE is available in either a 32mm flange border frame suitable for all general purpose sidewall

and ceiling installations or a channel frame border particularly suited for lay in, suspended ceiling applications. The 45° core option on GECA/45 is designed to offer reduced visibility through the core (depending on viewing angle).

Series Options:

TYPE GECA - 13mm square Eggcrate grille in 32mm flange frame.

TYPE GECA/45 - 13mm square Eggcrate grille with directional 45° core.

TYPE GEC - 13mm square Eggcrate grille in channel border frame.

TYPE GEC/45 - 13mm square Eggcrate grille with directional 45° core.

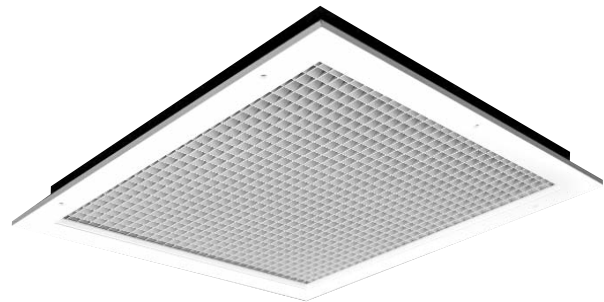
Both GECA and GEC units are available complete with screw driver operated, rear mounted opposed blade volume control dampers as well as other accessories such as knob operated dampers and special fixings such as concealed bracket. Due to limited access through the core these accessories are

not available with the 45° core.

Standard finish on the GE Series is a Polyester Powder White. Other special colours and finishes are available on request.

Features

- 13mm Eggcrate Core.
- Flange or Channel Frame Border.
- Wide Flexible Size Range.
- Extruded Aluminium Construction.
- 0° or 45° Eggcrate Core



Performance Data

All GE type units can be sized and selected from the nomogram up to a maximum size of 1200 x 1200.

References used:

PRESSURE: All pressures are in Pa (N/m²).

SOUND: measured in average dBA level.

K Factor (free area) on the GE Series is approx 90%.

Selection Procedure

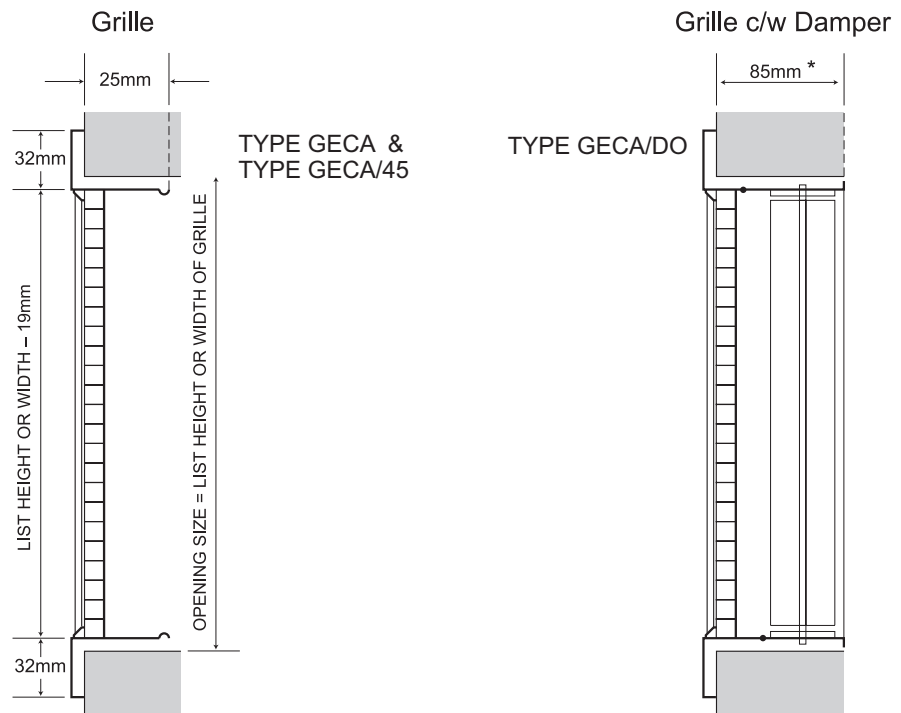
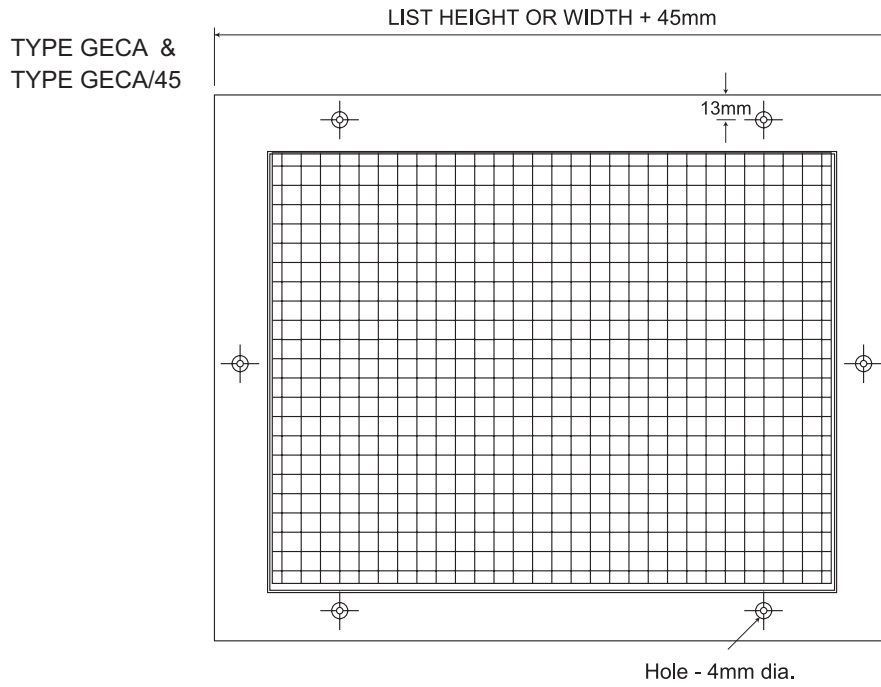
Referring to table determine the maximum permissible velocity relative to the volume for the application. Reference can then be made to the Series GE sizing nomogram from which the terminal size can readily be determined and additional data such as sound levels, jet velocity and pressure drops calculated.

Please note that noise level data is only available down to NC20. For selection at lower noise levels please consult with our technical department.

Table of Recommended Velocities

Space Served	Sound Level db 'A' Scale	Air Volume	0.05 m ³ /s	0.25 m ³ /s	1.0 m ³ /s
Broadcasting & Recording Studios	20 - 25	Velocity m/s	2.0	1.5	1.0
Board or Conference Rooms, Churches, Concert Halls, Hospitals, Lecture Theatres, Offices, Hotels, Private Houses	30	Velocity m/s	3.0	2.5	2.0
Banks, Courtrooms, General Offices, Libraries, School Classrooms	35	Velocity m/s	3.5	3.0	2.5
Cinemas, Department Stores, Restaurants	40	Velocity m/s	4.0	3.5	3.0
Computer Rooms, Supermarkets	45	Velocity m/s	4.5	3.75	3.25
Laundries and Kitchens, Typing Pools, Pools, Sports Arenas, Light Engineering Factories,	50	Velocity m/s	5.0	4.25	3.5
Heavy Engineering Factories	60	Velocity m/s	8.0	6.5	5.0

Type GECA



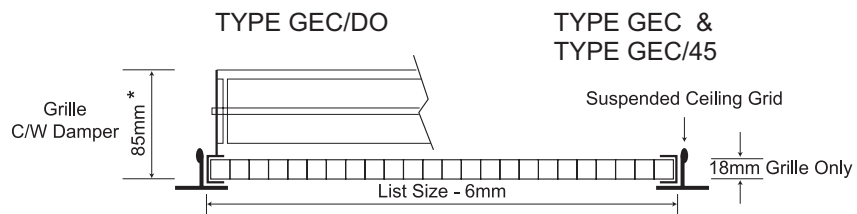
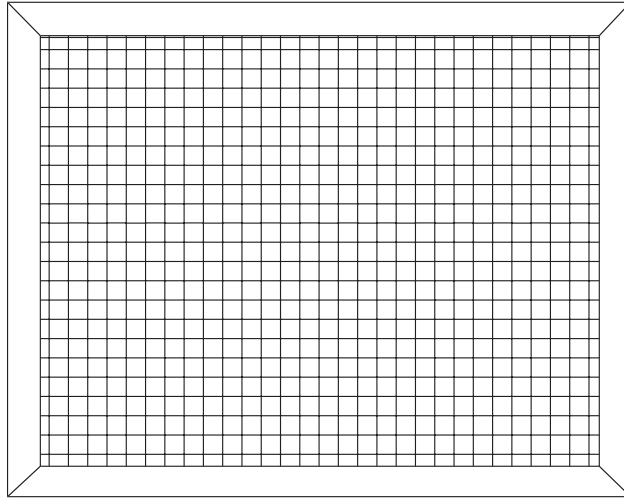
* Max depth - Depth may be lower depending on damper fitment. Please check where necessary



Type GEC

TYPE GEC &
TYPE GEC/45

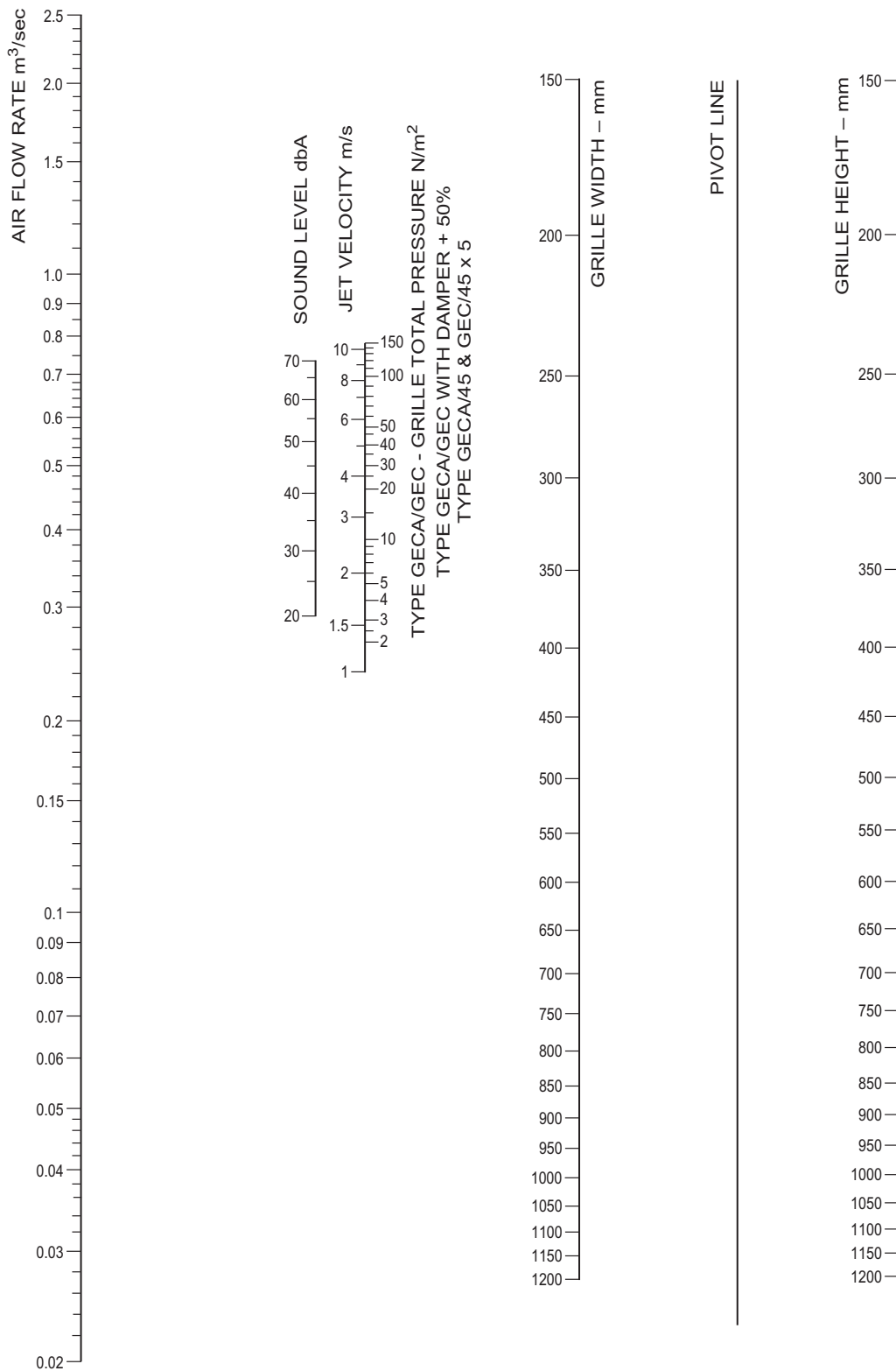
LIST SIZE WIDTH x HEIGHT
OVERALL SIZE = LIST SIZE - 6mm
STANDARD LIST SIZE = 600 x 600 (594 sq o/a)



* Max depth - Depth may be lower depending on damper fitment. Please check where necessary



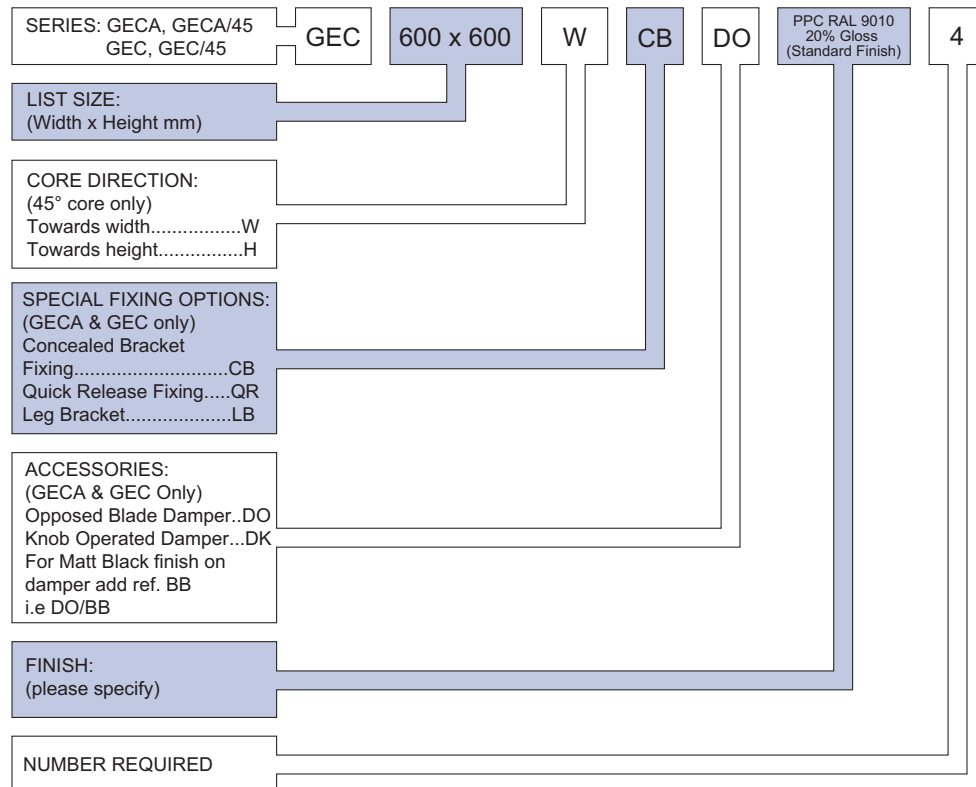
Sizing Nomogram



SERIES GE

Eggcrate Grilles

Ordering Specification



Finish

Standard Finish: Polyester Powder Coat White RAL 9010 20% Gloss (Dampers mill finish).

Special Finishes: Polyester Powder finish to Stock BS or RAL colour. (Dampers mill finish aluminium or Galvanised steel)

Size Range

From 100 x 100 up to 1200 x 1200 in 1mm increments as standard.

For other sizes please contact HeadOffice.

Standard list size on GEC is 600 x 600 (594 x 594 o/all).

Fixing

GECA & GECA/45: Standard Flange Screw Fixing.

GEC & GEC/45: Lay-in application. No fixings provided.

Options

Special fixings, border options, damper options and plenum options are detailed separately in the grille section options and accessories data.

GILBERTS

Head Office and Works
GILBERTS (BLACKPOOL) LTD
Gilair Works, Clifton Road,
Blackpool.
Lancashire FY4 4QT.
Telephone: (01253) 766911
Fax: (01253) 767941
e-mail: sales@gilbertsblackpool.com
Web: www.gilbertsblackpool.com

